

# NATURAL GAS FIRE SAFETY & EMERGENCY RESPONSE SEMINAR

Presented by: *Wheeler Basin Natural Gas Company*

## Information about Natural Gas:

- Each day underground pipelines carry natural gas safely and efficiently to millions of homes and businesses across the US.
- In our community, underground pipelines provide natural gas service to homes, businesses, schools and industries.
- The natural gas industry is regulated by Federal and State regulations with regard to design construction, operation and maintenance
- Natural Gas pipelines are buried underground, "markers" are used to indicate the pipeline's approximate location.
- Information on markers includes the telephone number for reporting emergencies
- Markers indicate the general location of the pipeline and should not be relied upon for the exact location of the pipeline
- It is a crime for any person to willfully deface, damage, remove or destroy any pipeline marker required by Federal law.
- If you ever smell gas, **Call us at 256-974-9023** or in case of a natural gas pipeline emergency call **911**.



## WHEN LEAKS OCCUR:

### FACT:

Natural Gas is odorless, and colorless. The chemical *Mercaptan* is added to Natural Gas to give an odor. *Mercaptan* has a sulfur, or "rotten egg" smell that makes Natural Gas easily detectable.



### RECOGNIZING LEAK:

1. An odor near meter or pipeline - similar to sulfur
2. A hissing or roaring sound.
3. A patch of dead vegetation
4. Bubbling in wet areas, or creeks



### LEAK IS DETECTED:

1. Turn off all vehicles and equipment.
2. Extinguish all ignition sources that could spark a flame.
3. Do not attempt to operate pipeline valves or equipment.
4. Block area off if possible.
5. Notify local 911.



### COMMON CAUSES OF LEAKS:

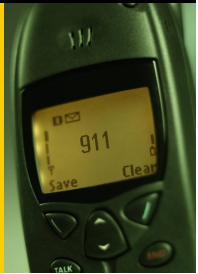
1. Accident
2. Mother Nature
3. Excavation without locates
4. Pipeline Failure





## APPROACHING AN INCIDENT: STEPS TO FOLLOW

- Pay attention to wind direction
- Keep vehicles a safe distance away
- Barricade area and stop traffic if necessary
- Determine whether to evacuate
- Turn off cell phone



**When Natural Gas is involved:**

- Always contact gas company when incident involving Natural Gas occurs
- Park vehicles upwind
- Evacuate the area immediately

## EMERGENCY RESPONDERS :



- Priorities: Safety of people; then Safety of property
- Move everyone a safe distance away from site
- Dial 911
- Notify Pipeline Operator
- WBNG provides 24/7 emergency service 256-974-9023



### Natural Gas Fires:

- Let it burn. Contact local utility and wait for them to arrive; meanwhile evacuate the area.
- For structure fires, shut off the gas supply **ONLY** if you can safely access the meter. Once gas is off, remain alert for gas migration and re-ignition
- Do not use water to suppress a natural gas fire. Use a dry chemical, Type B



## EXCAVATION & DAMAGE PREVENTION

Pipeline operators are required to adhere to many state and federal laws. All pipeline distributors are subject to DOT regulations regarding operation, maintenance and safety of their pipelines. These regulations also require safety training for company personnel, public officials, emergency responders, and excavating contractors. Knowing how to respond to an incident, can save lives and property.

Damage Prevention begins with a FREE call to Alabama 1 Call. Alabama Law states you must CALL BEFORE YOU DIG, for any project. Damage caused by digging without a locate will incur costs of repairing damage, gas loss, and other charges assessed by the Pipeline Company. Civil penalties can be up to \$10,000. Alabama 1 Call's campaign to "**Know What's Below**" and the new **811** phone number makes it easy and convenient.



**Know what's below.  
Call before you dig.**

### EXCAVATION SAFETY

- Always CALL BEFORE YOU DIG
- Wait 48 hours in order for location to be marked
- Respect color coded marks
- Dig SAFELY, Use CAUTION around underground facilities

## EXAMPLES OF ACCIDENTS INVOLVING IMPROPER EXCAVATION:



**All ABOUT  
WHEELER BASIN  
NATURAL GAS  
COMPANY**



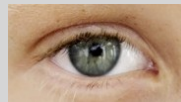
*Wheeler Basin Natural Gas Company, distributes natural gas to residential, commercial and industrial customers in and about Lawrence and Morgan counties, primarily in and near the communities of Falkville, Priceville, Somerville and Trinity. Wheeler Basin, a wholly owned subsidiary of Joe Wheeler EMC, was incorporated in May of 1994 as an Alabama corporation and is registered as a public utility company, subject to the regulatory authority of the Alabama Public Service Commission. Wheeler Basin is committed to providing customers with a safe, reliable, efficient, economical source of energy, all while striving to give the best possible customer service, payment options, and promotional programs.*

*Call today - (256) 974-9023 - to let us help you with your energy needs and to discuss the benefits of using natural gas*



**256-974-9023**

*Always remember the  
three S's*



**SIGHT**



**SMELL**



**SOUND**